

the PATHFINDER

Photo by Chloe Green

Monday, November 4, 2024 Issue 7 Vol. 135



Volleyball 2024



Photos by Chloe Green

LC State Volleyball 2024 season
players including:

Abbey Neff (1)	Anna Merrill (14)
Ella Stocich (2)	Natany Felix Guimaraes (15)
Abby Beaton (3)	Karissa Lindner (17)
Esther Kailiponi (4)	Juliauna Forgach Aguilar (18)
Hallie Seaman (5)	Makenzie Stout (20)
Taylor Boyce (6)	Katie Rainville (21)
Kate Schneider (7)	Taylin Rowley (22)
Teagan Scott (8)	
Gianna Anderson (9)	
Missy Mortensen (11)	
Hannah Dotson (13)	

Volleyball 2024



The Mad Hatter
TEA SHOP

- Autumn Teas
- Wellness Teas
- Local Honey
- Tea Leaf Reading Kits

Your World Right Here!

800 Main Street | Newberry Square
Tues.-Sat. 10am-5pm • tenaciouspsinc@gmail.com
208-743-9782 [TenaciousPsTeasAndCommodities](#)

Join Us For Our Weekly Open Meeting!

Come hang out, have fun, and stay in the know.
Fridays at 11:30 a.m. in the Clubhouse (SUB/CSL 219)

Follow Us On Instagram! @TheASLCSC



Warriors Wrap up 2024 Volleyball Season

By Emmett Demlow

As the regular season comes to a close for LC State's Volleyball squad, The Pathfinder is looking back on 2024 and celebrating the success of our Warriors.

Although the Warriors finished the 2023 season at 10-18, there were still plenty of expectations heading into this season. Second-year head coach Katie Palmer entered the season hoping to find a balanced and competitive roster, and that is exactly what she got. As of October 28, the team is 13-10 with their sights set at a possible run in the upcoming Cascade Collegiate Conference tournament.

LC State opened up their season with a tough road trip in Nebraska, but they were able to start the season off hot, taking two out of three games including a win over the then #17 ranked team in NAIA, College of Saint Mary. On the final game of the road trip, Junior outside hitter Juliana Forgach Aguilar posted 27 kills, and the team recorded a season-high 65 total kills in an outstanding match against Hastings College.

The Warriors then returned home for the Hells Canyon Invitational,

where they once again won two of the three games. In the home opener against Pacific Union, LC State put up a dominant performance, holding the Pioneers to 32.0 points en route to a sweep. The team continued their dominance in a win over Walla Walla University that same day, winning 3-1 in a game where LC State out blocked Walla Walla 9-2.

After a short two game slide, LC State rebounded with an incredible five game win-streak, putting up some of their best performances of the year. During the streak, the Warriors only lost four sets. The team also averaged a .283 hitting percentage, their best over a five-game stretch all season. LC State set a season-high mark in assists against Multnomah, hitting 63 as a team. In the last match of the streak against Oregon Tech, setter Esther Kailiponi recorded her 1,000th career assist, a milestone stat for the junior.

While the Warriors lost their winning streak against #5 Southern Oregon, they still were able to play one of their best games of the season. The team hit 16 blocks in four sets, a season-high. 10 of the blocks came from Senior middle blocker Missy Mortensen.

On October 4, LC State played an outstanding game against the currently ranked College of Idaho, winning in five sets. Forgach Aguilar was the star of the game, recording a career-high 32 kills to help push the Warriors to a win in a game where they were outplayed in both assists and blocks.

Three sweeps in LC State's last six games have kept their conference play-off hopes firmly in view. The Warriors posted their two highest hitting percentages of the year in this stretch, hitting .347 against Evergreen State, and .430 against Warner Pacific. In the homecoming game against Evergreen State, not only did the offense catch fire with ten different players recording a kill, but setter Abbey Neff also recorded her 2,000th career assist.

The Warriors have had plenty of statistical successes throughout the season. As of October 28, Juliana Forgach Aguilar leads the conference in kills, tallying an astounding 395 kills so far this season. Missy Mortensen ranks sixth in the conference in hitting percentage, hitting .306 with only 26 errors all season at the blocker position.

Libero Natany Felix Guimaras has led a team-wide

effort of successful digs this season, as she ranks fourth in the conference with 4.88 digs per set. The team as a whole ranks second in the conference with 16.2 digs per set.

Esther Kailiponi and Abbey Neff have both eclipsed 300 assists this season, with 375 and 338 respectively.

Kailipni, Makenzie Stout, and Ella Stosich have all performed well as servers, with over 25 service aces each. Missy Mortensen leads the squad with a resounding 81 blocks on the season.

So far, the team has performed at their best when playing in the P1FCU Activity Center, with a 7-4 record in front of the home crowd.

The Warriors have two games left in the regular season at home, on November 8 against Bushnell and November 9 against Corban University for senior night.

LC State is currently ranked sixth in the conference with a 10-8 record within the CCC. Make sure to support your hometown squad as they push for the playoffs this year!

For more, visit lcwarriors.com



Photos by Chloe Green



LC State Theater Program Presents “The Turn of The Skrew”

By LC State Office of Communications and Marketing

The Lewis-Clark State College theatre program will perform “The Turn of the Screw” from Nov. 7-17 at the Silverthorne Theatre. The play is open

to the public and appropriate for ages 12 and up.

“This play will have you asking what is real and what isn’t. Who and what can you trust? Can you believe even your own eyes,” said Visiting Instructor of Theatre Lane Richins.

Tickets can be purchased by cash only at the door and general admission tickets are \$10. Tickets for seniors, military, veterans, and students from other schools

are \$5. LC State students will receive free admission with a student ID card. The play will begin at 7:30 p.m. on Thursdays, Fridays, and Saturdays, and at 2 p.m. on Sundays.

“A wealthy uncle from London hires a governess to care for his niece and nephew in the country manor of their dead parents. What she finds there, and what happens next... would not be very nice to give away here,” said Richins. “This spectral, eerie ghost story is simply staged, putting a premium on imagination. The show features two electrifying actors giving powerhouse performances: LC State students Jessica Riggs and Zachary Steadman, both biology majors. It also benefits from the

talents of dialect coach Finn Drayden and Lighting Designer Clint Heimgartner.”

The play has been adapted by Jeffrey Hatcher from the novel by Henry James.

For more information on the play, contact Richins at blrichins@lscs.edu.



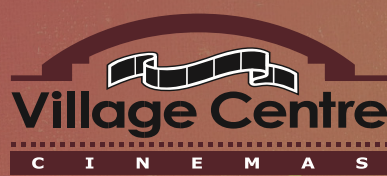
CAN'T HIDE YOUR

WARRIOR PRIDE!



OFFICIAL CREDIT UNION OF THE LCSC WARRIORS

Debit cards are only available to P1FCU members with an active checking account. Insured by NCUA.



2920 NEZ PERCE PLAZA
LEWISTON

SCAN THE QR CODE TO ACCESS SHOW TIMES



Visit www.VillageCentreCinemas.com for a full list of features and show times!



Whats Happening

World News

A Russian court fines Google \$2.5 decillion for blocking pro-Kremlin channels on YouTube

A ten-story hotel collapses in Villa Gesell, Argentina, killing one person and leaving at least seven others trapped.

Portuguese police activate special security protocols in response to two large demonstrations in Lisbon following the fatal shooting of a Cape Verdean immigrant by a police officer in Amadora on Monday, which resulted in widespread riots.

The number of people who have become ill in an E. coli outbreak linked to McDonald's Quarter Pounder hamburgers in the United States increases to 75.

The British government announces that single-use vapes will be banned in England and Wales beginning on June 1 2025.

North Korea launches an intercontinental ballistic missile on a "lofted trajectory" towards the Sea of Japan. Japanese Defense Minister Gen Nakatani says it was the longest-ever launch of a North Korean ICBM at 87 minutes long, marking significant progress in range compared to previous tests.

The World Food Programme warns of intensifying famine conditions in northern Gaza caused by ongoing Israeli aid blockades.

A team of archaeologists announce the discovery of more than 6,000 ancient Mayan structures hidden by vegetation in the southeastern Mexican state of Campeche, including a city of pyramids they dubbed Valeriana

Ukraine reports that the first North Korean units have entered the active "warzones" in Russia's Kursk Oblast. The North Korean soldiers are reportedly under the command of Deputy Defence Minister Yunus-bek Yevkurov.

A high court in Gulu, Uganda, sentences former Lord's Resistance Army commander Thomas Kwoyelo to 40 years in prison on 44 counts of war crimes and crimes against humanity, including enslavement, torture, and rape.

National News

Delta Air Lines files a lawsuit against cybersecurity company CrowdStrike after CrowdStrike's global outages in July forced the airline to cancel more than 7,000 flights, costing Delta Air Lines over \$500 million.

Four people are killed when a helicopter crashes into a radio tower in Houston, Texas, United States.

The FBI announces an investigation into the leaking of classified U.S. intelligence documents regarding military plans for Israeli retaliation against Iran.

The U.S. Defense Department finalizes a U.S. \$20 billion loan to Ukraine for military and economic support as part of a collective U.S. \$50 billion loan between G7 members.

At least two people are killed and 309 others are rescued in flash flooding in Roswell, New Mexico, United States.

Four people, including the perpetrator, are killed in a mass stabbing in Cincinnati, Ohio, United States.

Intelsat communications satellite Intelsat 33e breaks up in Earth's orbit, resulting in network disruptions to customers in Europe, Africa and parts of the Asia-Pacific region. The United States Space Force says they are tracking at least "20 associated pieces" of the satellite.

Five members of a family, including three teenagers, are killed in a mass shooting in Fall City, Washington, United States.

The presidential campaign of former U.S. President Donald Trump files a formal complaint to the Federal Election Commission against the United Kingdom's Labour Party, accusing the Labour Party of "blatant foreign interference" in the election to support the Kamala Harris presidential campaign.

Local News

According to Asotin County Fire District #1, when the first crews arrived they found a fully involved home with fire and smoke extending into another home next door. Two residents were transported by ambulance to St. Joseph Regional Medical Center with injuries sustained in the fire.

State officials announced Wednesday that a severe form of bird flu has been detected for the first time in a pig on a small unidentified farm in Crook County in central Oregon.

The Orofino Police Department announced that it will once again sponsor and participate in the Christmas 911 program, a local initiative aimed at providing full Christmas dinners and gifts to families in the community experiencing hardship. Now in its 15th year, the program has successfully supported up to 30 families and 70 children annually.

The U.S. Fish and Wildlife Service is offering a \$10,000 reward for information on the killing of two gray wolves in Washington this month.

The Upriver Youth Leadership Council (UYLC), in collaboration with the Idaho State Liquor Division and the Idaho Office of Drug Policy, is actively running the Holiday Sticker Shock Campaign to combat underage drinking.

A Craigmont man is facing a felony charge after allegedly kicking a police officer that was called to an incident on Main Street in Lewiston.

The Lewiston High School Girls soccer team secured 6 spots on the 5A Inland Empire League (IEL) First Team, along with their coach Scott Wimer voted "Coach of the Year" for the second consecutive year.

On October 30, 2024, at 12:15 PM local time, a magnitude 6.0 earthquake occurred off the coast of Oregon, according to the U.S. Geological Survey (USGS). The epicenter was located at 43.544°N, 127.799°W, approximately 173 miles west of Bandon, Oregon.

Animal News

Grizzly 399, famed Yellowstone area bear, killed in Wyoming car accident. The U.S. Fish and Wildlife Service said the 28-year-old bear was identified through her microchip after being hit on a highway in Snake River Canyon.

9 monkeys who died in Hong Kong zoo had been infected with melioidosis, officials say. The deaths may be related to digging work to repair some irrigation pipes under the flower bed near the monkey cages in early October, an official said.

Bao Li, a 3-year-old male, and Qing Bao, a 3-year-old female, are the latest of their species to be sent to the U.S. after a series of repatriations from American zoos raised concerns that geopolitical tensions could be hurting "panda diplomacy," a longtime symbol of friendship between the world's two largest economies.

Alligators and snakes lurk in Florida floodwaters after Hurricane Milton

Alaska's annual fat bear competition results are in. Female bear "Grazer" won her second competition in a row and beat "Chunk", a male who had killed Grazer's cub over the summer. The competition was bracket style starting with 12 bears who have been fan voted down.

Gov. Jeff Landry confirmed his support on Tuesday of restarting the tradition of bringing Louisiana State University's live tiger mascot onto the football field ahead of home games.

Drone video of gray whales captured over seven years off Oregon has revealed new details about how the giant marine mammals find and eat food.

What's Happening On Campus

NOV
WEEK 13

MONDAY 4

9:30AM -> PATHFINDER WEEKLY MEETING SUB 225

PATHFINDER ISSUE 8 COMES OUT!!

6PM-7PM -> OPEN MIC NIGHT AT JITTERZ

TUESDAY 5

NOON-1PM -> NATIVE AMERICAN CLUB WEEKLY MEETING

6PM-8PM -> 3V3 BASKETBALL

WEDNESDAY 6

NOON-3PM -> GRAD FEST

4:30PM -> MAGIC THE GATHERING (MLH 130)

5:45PM -8PM MYSTERY VAN

7PM VOLLEYBALL OPEN GYM

THURSDAY 7

6PM-8PM -> 3V3 BASKETBALL

FRIDAY 8

11:30AM-12:30PM-> ASLCSC OPENING MEETING

3PM-4PM -> GSA MEETING

VOLLEYBALL VS BUSHNELL 6PM-8PM!!!

SATURDAY 9

VOLLEYBALL VS CORBAN 4PM-6PM!!!

SUNDAY 10

7PM-8PM-> VOLLEYBALL CLUB OPEN GYM

NOTES:

CHECK OUT THE LC STATE DO MORE APP FOR MORE EVENTS!

NOV
WEEK 14

MONDAY 11

9:30AM -> PATHFINDER WEEKLY MEETING SUB 225

5PM-6:30PM -> SPEECH AND DEBATE

TUESDAY 12

NOON-1PM -> NATIVE AMERICAN CLUB WEEKLY MEETING

6PM-8PM -> 3V3 BASKETBALL

7PM -> TRIVIA NIGHT

WEDNESDAY 13

3PM-4PM -> JUSTICE STUDIES CLUB

4:30PM -> MAGIC THE GATHERING (MLH130)

7PM-8PM -> VOLLEYBALL OPEN GYM

THURSDAY 14

6PM-8PM-> 3V3 BASKETBALL

6PM-7PM-> GROCERY BINGO

FRIDAY 15

11:30AM-12:30PM-> ASLCSC OPENING MEETING

3PM-4PM -> GSA MEETING

RAFFLE TICKET SALE RODEO AND EQUINE CLUB

SATURDAY 16

WARRIOR BASKET BALL 4PM-6PM

SUNDAY 17

7PM-8PM-> VOLLEYBALL CLUB OPEN GYM

CHECK OUT THE LC STATE DO MORE APP FOR MORE EVENTS!

DeArmond Planting Party

By Craig Newsom

Daffodils, Allium and Hyacinth peek out from the freshly turned and fortified soil in front of the DeArmond Center at the Coeur d'Alene Higher Education Campus this Spring. More than 25 people shared spades, rakes, trowels and a heart to see things grow. Children and adults worked side-by-side Saturday to plant three rows of bulbs in each of the two raised beds in front of the building. Four sage bushes were also planted and now enhance the street

appeal with some upward movement.

A group from LC State Honor Society met 10 days previously with two members of the North Idaho College staff to turn some "quarter green" into the soil in preparation for the planting day. The event boasted some treats and beverage service from Alladin Campus Dining which included apple cider, hot cocoa and coffee. Children took home a bucket of soil, seeds to plant, the memories they created during the event.

Now there is lavender aplenty dressing up the

foundation and the walkways, with a few 'Black Eyed Susans' scattered in.

Trevis Wilson, Supervisor of Landscape Services for NIC explained that planting in front of this building has been a challenge. This is due to the Southern sun shining off the building in Summer combined with the dark rock along the concrete walkways creates a real "hotbed" for plants.

The team at NIC are looking at options to add to the planting this Spring and the LC State Ambassador Honor Society intends to be there. NIC has a

greenhouse and Todd, "the flower guy," is already starting the sprouts that will be next years plants. The greenhouse saves the college money and affords the staff the opportunity to take full responsibility for the plants from the time they sprout to the time they are planted and on.

The Ambassador Honor Society is hoping to plant some food bearing plants this Spring. There are two other areas that the Honor Society has been invited to participate in planting. One on the North side of Meyer Health and Sciences Building where there is two small plots that may be just perfect to see who can grow the largest squash, or something else fun.



Who knows? Maybe next year around this time you'll be reading about Idaho's largest pumpkin grown right here by LC State students in CDA. Happy Planting!



Join Us For

Christmas Family Photos

Make beautiful memories with your family!

11/16/2024 11AM-3PM

HOTSHOTS CAFE

- 30\$ FOR GROUPS
- 20\$ FOR INDIVIDUAL

PETS WELCOME!!

ABSO LCSC

FREE CANDY CANES



What Happened for Halloween

**By Daphany Elonen
and Jadence Gingerich**

If you are 21 or older, the Old School Liquor Bar located in Coeur d'Alene hosted a Halloween Costume Contest Party on Saturday, October 26 between 7-10 pm. There was live music featuring the Tamarack Ridge Band with food, drinks, and prizes for the best dressed!

A Halloween Carnival was hosted in Hayden on Friday, October 25 at 4 p.m. They had vendors, candy, and costumes galore! This was a family friendly event that welcomed family friendly fun.

If you were looking for an early Trick or Treat because you had to work on Halloween, there was a Trick or Treat by Riverstone (off of I-90, near North Idaho College Campus) on Saturday, October 26. According to the information provided by the hosts, participating businesses had a balloon outside if they are giving out candy. There will also be a Caramel Apple Bar and Face Painting hosted by The Culinary Stone. The location is 2010 N Main Street in Coeur d'Alene.

Coeur d'Alene Public Library hosted events for Halloween as well. On Sunday and Wednesday (October 27 & 30) for children ages 12 and older they held a Halloween Origami session and then a "Witching Hour Watch Party."

Love running as a side hobby and want to challenge yourself to something more? The North Idaho College had their Halloween Hustle Half Marathon, 10k, 5k & Goblin Shuffle for a spooky jog that participants won't forget. This event was on Sunday, October 27th at the NIC Student Wellness and Recreation Center.

LC State College Warrior Entertainment Board and Gaming Club co-hosted a Human VS Zombies event. This was a cross campus event open to students and community members. It took students all around campus in an epic game of hide-and-go-seek/tag.



The 6th annual Tim or treat event put on at chief timothy was another huge success! There were 35 campers that decorated and even made mazes and each one had 30-40 pounds of candy. There were seven volunteers that came out to help along with 6 staff members and two food trucks, chili blues and Hopikas teriyaki. They had around 600 cars and were able to raise around \$2500.

CDA Mental Health Week

By Craig Newsom

Kristin Moody (right) is the community engagement representative for Safe Passage where Megan Warren (left) is serving her social work internship. In addition to offering an opportunity for students to sit down, rest, and be creative with some beads, they brought a message of hope. Safe passage has 24 hour crisis support for victims of violence, advocates, shelter services and does educational outreach. Thank you Safe Passage for supporting Mental Health Awareness Week!



Day 3 Of mental health awareness week. Students and staff get creative in building bracelets to spread good cheer and a message of hope.



Nothing but fun with kinetic sand for Mariah Mckinnon, Cassidy Morris and her son Mj.

Using kinetic sand helps students be in the moment. The gentle pressures required to manipulate it and the overall sensory experience working with it create tactile input for focus and may help regulate emotions.




The best part? None in our shoes!



Did you know?

Doing crafts can help us 'de-stress' when our schedules are demanding. It gives us a chance to take a breath and let the brain take a short break from formal processing. Some essential oils have been shown to uplift mood and calm nervous energy.



Are you at risk?
Sexually Transmitted Infections

Risk Factors

Behaviors that increase your risk

- Sex without a condom
- Multiple sex partners
- Having sex while under the influence of drugs or alcohol

Prevention

- Use Condoms
- Limit sexual partners
- Practice abstinence
- Get Tested!

What is it?


A virus, bacteria, fungus, or parasite people get through sexual contact.

How to get Tested

LCSC Student Health Services- Sam Glenn Complex 205
Call (208) 792 2251 to make an appointment

Scan the QR code to test your knowledge!!!

All data collected anonymously



Idaho Climate Change

By Issac Elonon

Dr. Craig Cooper spoke at North Idaho College to discuss climate change and its effect on Idaho's environment on October 26, 2024. Cooper is an environmental scientist who works for Idaho's Department of Environmental Quality and studies the specific effect that global climate change has on the ecosystem of Idaho's lakes and rivers.

During the talk, Cooper presented his findings, much of which has been gathered for over the last one-hundred years, on the effects of global warming and steps that can be taken to mitigate it.

According to Cooper, the first global temperature data on record was captured in the early 1800s. Since then, although there have been dips and spikes in the graph representing the change in global temperature, the earth has witnessed a significant overall increase in temperature over the last two-hundred years.

One of the more consequential changes since the 1800s in this regard is an eight to ten degree increase in temperature over the arctic. This warming results in melting of the arctic icecaps, which leads to rising sea levels.

Cooper laid out a simple chain of events that demonstrate how in-

creased greenhouse gases lead to warming. Modern industrial technology emits various greenhouse gases as biproducts including carbon dioxide, methane and nitrous oxide. These biproducts carry extra heat with them, but they don't disappear—they stick around. As more and more of these accumulate, the temperature of the atmosphere increases.

Melting icecaps are not the only primary concern of global warming. Increased temperature also leads to more heat-related injuries.

Some Idahoans sometimes think that Idaho, with its harsher winters and relatively mild summers, is safe from the effects of global warming. Cooper presented findings that, to him, show this to be far from the truth.

One concern he pointed out is that fifty percent of the water Idaho uses comes from melting snowpacks. As temperature rise, the amount of precipitation that comes as winter snowfall decrease as winter rainfall increase. This directly affects the amount of Idaho's usable water. Current projections show that fifty to seventy-five percent of snowfall could possibly be converted to rainfall over the next couple of decades.

Projections also show significant change in sum-

mer highs for Idaho by mid and end of century. The current summer high average 101 degrees. Summer highs by mid and end of century increase to 108 and 111 degrees, respectively. Additionally, average winter lows in Idaho by the end of the century are projected to be above freezing.

When the air temperature rises, so does water temperature. One result this leads to is an increase in algae, impacting the ecology in our lakes. Notably, certain fish need water to be in a specific temperature range to inhabit it. When less of the water in a lake or river remains cold enough, fish such as cutthroat, which prefer colder water, have less habitable

space, thus leading to population decline.

When asked what you can do to make an impact on the environment, Cooper listed a few of steps that individuals and local communities can take. If it's in your budget, he says, moving to an electric vehicle reduces your carbon footprint. For less costly action, Cooper recommends biking around locally, as this has a similar effect. He also added that eating locally grown food is not only good for the success of local businesses, but it also reduces the community's carbon footprint because less gas is required to transport goods.

At the end of the talk, Cooper was asked what we

can do to convince Idaho's legislature to act as best we can. He said that it comes down to getting together as a community to talk to the community leaders, because they are the ones that can truly convince the legislature to make positive change.

Those interested in learning more about Cooper's work can find his published studies online through ResearchGate, an open access research site with published studies and research from thousands of scholars.

(Photo of Lake Coeur d'Alene)



the PATHFINDER pals

Editor

Shaunasy Pashby

Advisors

Seth Bradshaw & Dana Parsons

Assistant Editor

Jadence Gingerich

Business Manager

Lizette Ohlund

Content Contributors

Craig Newsom
Lydia Hellewell
Issac Elonen
Daphany Elonen

Emmett Demlow
Chloe Green
Madelyn Hutchison

Sleep	Support (x2)	Laugh	Restraint
Exercise	Mindfulness	Yoga	Counselor
Nutrition	Socialize	Emotions	Nap
Meditation	Hobby	Connect	Time Management
Relax	Rest	Prayer	Order
Hydrate	Journal	People	Thankful
Routine	Breathe	Healing	Happy
Balance	Fun	Self	Good Envirment

A	J	S	L	E	E	P	E	L	U	F	K	N	A	H	T
J	R	O	N	N	U	T	R	I	T	I	O	N	E	X	U
D	J	A	U	T	A	E	S	N	S	V	H	L	A	D	S
L	Y	G	F	R	S	U	S	O	C	I	A	L	I	Z	E
M	A	O	D	T	N	I	E	T	R	R	E	F	H	H	L
I	E	Y	B	A	L	A	N	C	E	R	W	L	T	E	F
H	H	D	F	Y	I	M	L	E	H	G	U	A	L	A	R
D	H	S	I	N	K	L	U	N	O	N	E	X	H	L	E
H	D	U	R	T	G	X	F	N	B	R	N	G	T	I	S
N	A	P	O	K	A	X	D	O	B	W	D	S	D	N	T
S	U	P	P	O	R	T	N	C	Y	B	N	E	W	G	R
P	E	O	P	L	E	Z	I	C	R	E	X	E	R	O	A
Q	P	R	A	Y	E	R	M	O	O	G	N	A	E	M	I
J	C	T	B	U	K	C	O	U	N	S	E	L	O	R	N
G	O	O	D	E	V	N	V	I	R	O	N	M	E	N	T
A	T	N	E	M	E	G	A	N	A	M	E	M	I	T	A

Content Contributor Spotlight



Hello! My name is Isaac Elonen, and I am twenty-five years old, a husband to my wife, and a father to my beautiful daughter, Elizabeth. I am an Elementary Education Major and junior at LC State. I have lived all over Idaho but grew up mostly in Post Falls. Having just got out of the Army, I have traveled the U.S. and the world many times over and had a blast doing it! My favorite part about being in the military was getting to meet new people. Now that I have settled back down in Idaho, I plan to complete my teaching degree and teach middle school or high school math. In my free time, you can find me fishing, hiking, frisbee golfing or pretty much anywhere outdoors.